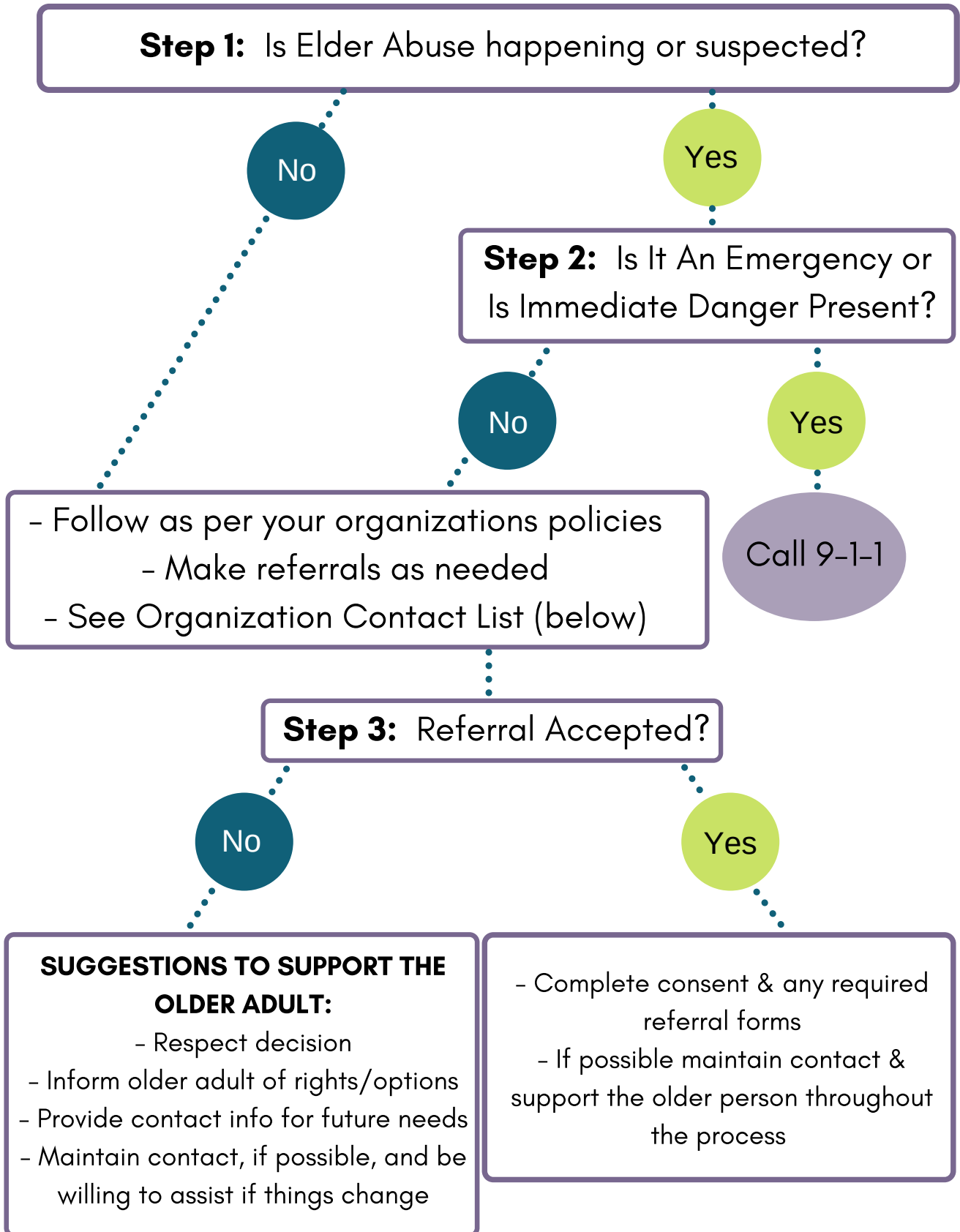


ELDER ABUSE RESPONSE FLOW CHART



310-1818 Family Violence Line, 180 Languages, 24/7

1-800-661-7949 Medicine Hat Women's Shelter Society, 24/7

211 - Information & Referral, 180 languages

1-866-644-5135 Sexual Assault Alberta Crisis Line, 24/7

403-529-8400 Medicine Hat Police Services (Non-emergency), 24/7

Developed for the Medicine Hat & Area Elder Abuse Prevention Coalition, - September 2019

Medicine Hat & Area Elder Abuse Prevention Coalition's Definition of Elder Abuse:

Elder Abuse is any action or inaction by a person(s) in a trusting relationship that jeopardizes the health or well being of an older adult causing harm or distress. Elder abuse can take several forms including, financial, psychological or emotional, sexual, spiritual and/or neglect.

- **Financial Abuse** is the misuse of an older adult's funds or property through fraud, trickery, theft or force. Can be difficult to detect because it often occurs over a period of time.
- **Sexual Abuse** is any unwanted form of sexual activity, behavior, assault or harassment of an older person.
- **Spiritual Abuse** is any act of denying or forcing, or ridiculing religious or spiritual beliefs or participation in religious services.
- **Physical Abuse** is the use of physical force causing discomfort, which may or may not result in bodily injury, rough handling, physical pain, or impairment.
- **Psychological & Emotional Abuse** diminishes the identify and self-worth of older adults. It can also provoke intense fear, anxiety or debilitating stress.

***Not all abuse is criminal in nature, but all abuse is wrong!**

Other Important Numbers:

403-529-8000 Medicine Hat Regional Hospital

403-529-3744 or **1-877-427-4525** Office of the Public Guardian
(Personal Directives, Guardianship and/or Trusteeship info.)

403-529-8307 Veiner Centre, Seniors Centre

403-525-8885 Meals on Wheels

1-888-357-9339 Protection for Persons in Care

403-548-2288 RCMP Redcliff Detachment